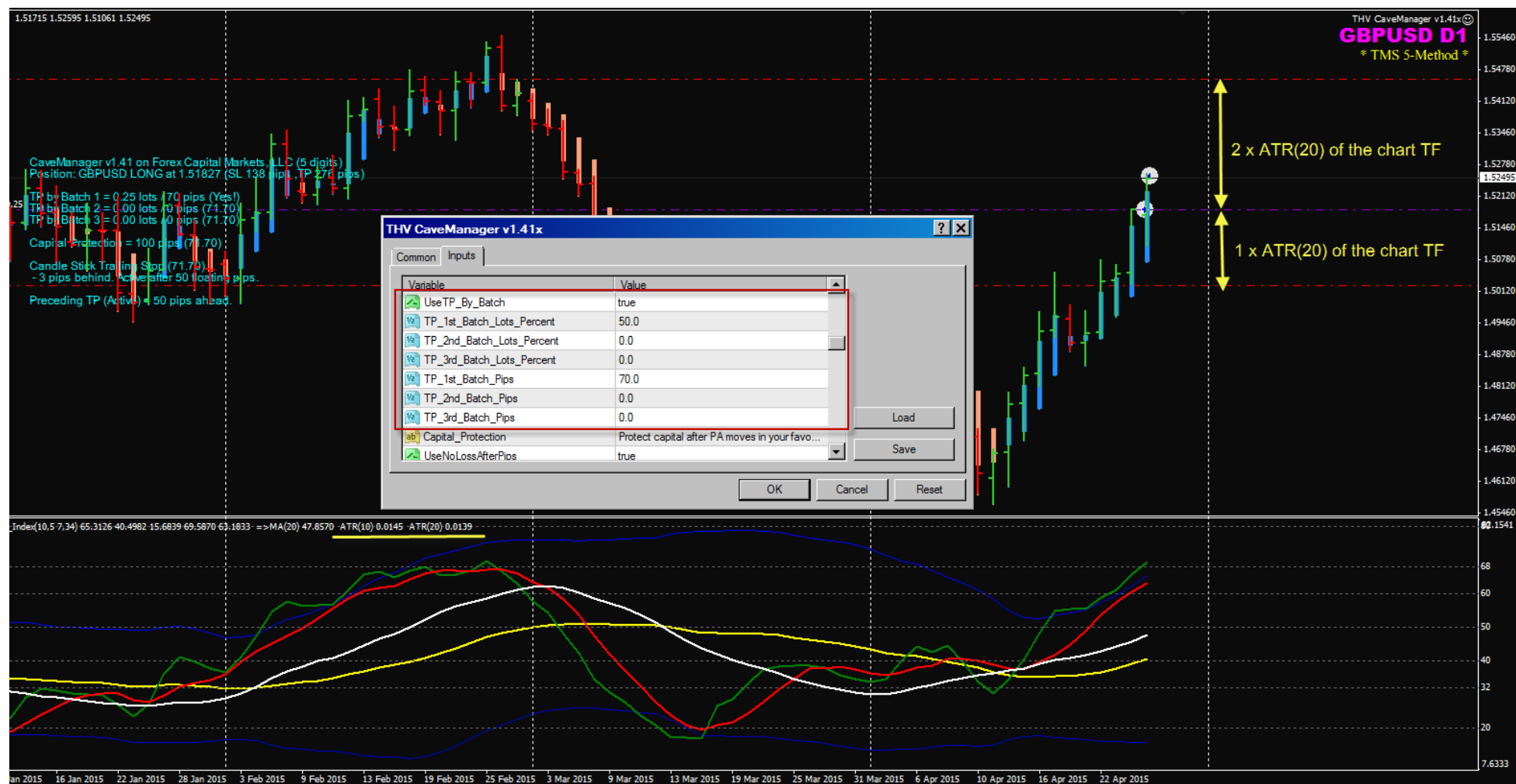


CaveManager setting for FF member hsn



THV CaveManager v1.41x

Common Inputs

Variable	Value
Can_use_Both	Both Pivot and Batch can be combined to ...
UsePivots_for_TP	false
Include_Mid_Levels_SR	false
TP_1st_Lots_Percent	100.0
TP_2nd_Lots_Percent	0.0
TP_3rd_Lots_Percent	0.0
Settings_for_SDX_Pivot	Enter the SDX-TzPivots Settings below
HrsServerTzFromGMT	2
HrsChoiceTzFromGMT	0

Load Save

OK Cancel Reset

Since we do not use the Pivots feature all these setting are disabled.

THV CaveManager v1.41x

Common Inputs

Variable	Value
HrsChoiceTzFromGMT	0
Show_1Daily_2FibonacciPivots	1
DST_Settings	Choose DST Zone or customize one.
DST_Zone_Settings	1-US/2-EU/3-AUS/4-NZ/5-Customize
Auto_Adjust_For_DST	true
DST_Zone	1
To_Cutomize_DST_Settings1	Enter which Sunday of the month
To_Cutomize_DST_Settings2	DST should start and end.
To_Cutomize DST Settings3	1-1st Sundav. 2-2nd7-Last Sundav

Load Save

OK Cancel Reset

THV CaveManager v1.41x

Common Inputs

Variable	Value
UseTP_By_Batch	true
TP_1st_Batch_Lots_Percent	50.0
TP_2nd_Batch_Lots_Percent	0.0
TP_3rd_Batch_Lots_Percent	0.0
TP_1st_Batch_Pips	70.0
TP_2nd_Batch_Pips	0.0
TP_3rd_Batch_Pips	0.0
Capital_Protection	Protect capital after PA moves in your favo...
UseNoLossAfterPips	true

Load Save

OK Cancel Reset

TP_By_Batch... (Scaling-out)

You can have a maximum 3 exits set by the percentage of the trade size.

In this setting shown, the first scale-out is 50% of the trade and set to exit at +70pips.

Note, why 70pips?

It is about 50% of the ATR(20) which is about 139pips seen in the chart above.

The remaining 50% of the trade will be managed by CM according to the setting below.

THV CaveManager v1.41x

Common Inputs

Variable	Value
Capital_Protection	Protect capital after PA moves in your favo...
UseNoLossAfterPips	true
NoLossAfterPips	100
NoLossBuffer	0
Manage_Losses	Manage losses by batches
UseLoss_by_Batch	false
Loss_1st_Batch_Lots_Percent	25.0
Loss_2nd_Batch_Lots_Percent	25.0
Loss_3rd_Batch_Lots_Percent	25.0

Load Save

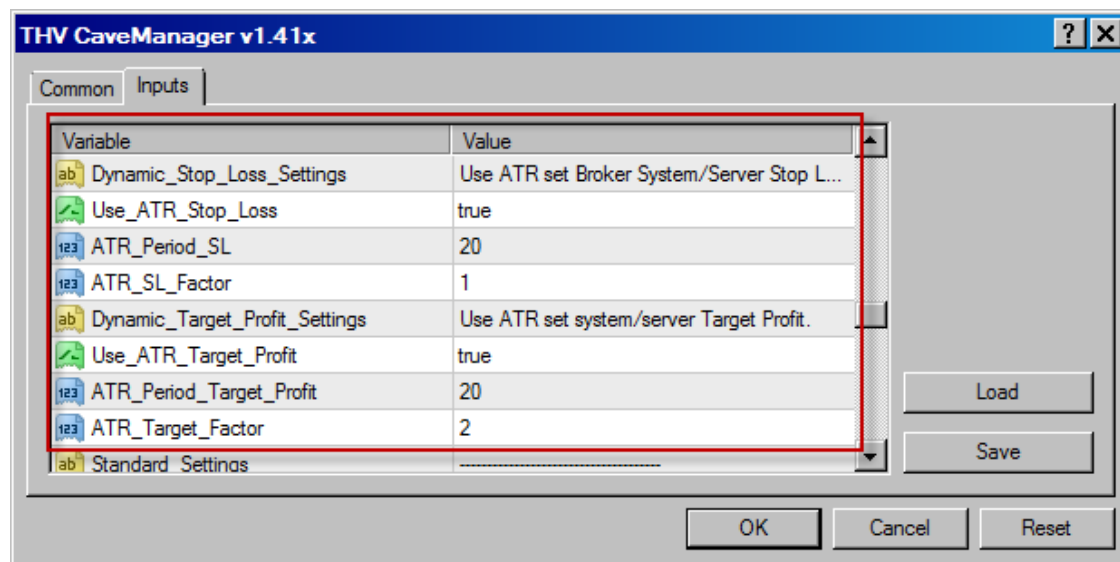
OK Cancel Reset

Capital Protection:

When the market move in your trade favour by 100pips, CM will move your initial SL to BE plus the number of pips in the NoLossBuffer. You can set the NoLossBuffer to 2 to 3 pips to cover your spread.

Manage_Losses by Batch

- not used- set to false



Dynamic_Stop_Loss:

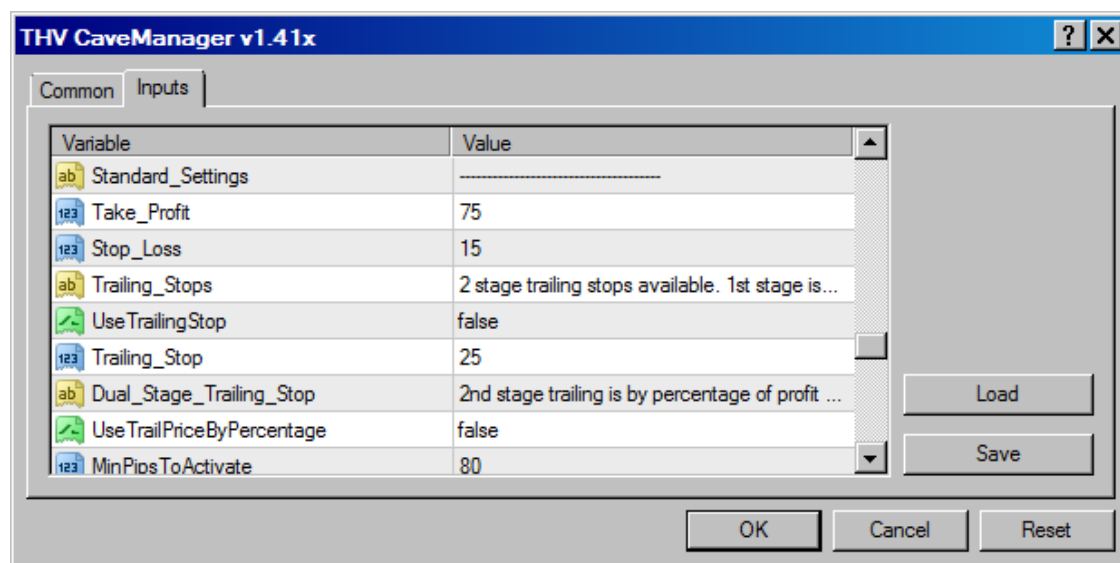
According to recent maret volatility.

In this setting the ATR(20) on the D1 chart TF is used.

SL is 1 x ATR(20) D1

TP is 2 x ATR(20) D1

See ATR(20) in the first chart above.



Standard_Settings:

Since the ATR Dynamic_Stop_Loss is use above,

CM will not consider this Standard Setting.

You have the option to change this Standard Setting to any figure you want. For example for intraday H1 trading, you can set the

Take_Profit to 100pips and

Stop_Loss to 50pips.

THV CaveManager v1.41x

Common Inputs

Variable	Value
Dynamic_Trailing_Stop_Settings	Use ATR set Trailing Stop.
Use_ATR_TrailingStop	true
ATR_Period_TrailingStop	20
ATR_Trail_Factor	1
Trail_by_Prev_Candle_HL	Trailing by last candle high (Sell) and low (...)
Special_Note	This supersedes all trailing methods.
Use_Trail_By_Candle_HL	true
Pips_Behind_Candle_HL	3
Activate_After_Pips	50

Load Save

OK Cancel Reset

Dynamic_Trailing_Stop..

Set according to your preference. Here it is set to 1 x ATR(20)

Trail_by_Prev_Candle_HL.

Note the red highlighted.

You can trail your D1 trades using this feature and to be activated after for example, 50pips.

It is better to set this to at least to the same ATR(20) value in pips... i.e. 139pips.

THV CaveManager v1.41x

Common Inputs

Variable	Value
Show_Status	true
Xshift	100
Yshift	150
WindowNum	0
WindowComer	0
Status_Font	Arial
Status_Font_Size	8
Status_Color	Aqua
Broker_Allow_Micro_Lot_Size	true

Load Save

OK Cancel Reset

User preferences for on screen display of CM setting

Allow micro lot setting = True.

Trade update, below.



Save your setting as Set file:

THV CaveManager v1.41x

Common Inputs

Variable	Value
Can_use_Both	Both Pivot and Batch can be combined to ...
UsePivots_for_TP	false
Include_Mid_Levels_SR	false
TP_1st_Lots_Percent	100.0
TP_2nd_Lots_Percent	0.0
TP_3rd_Lots_Percent	0.0
Settings_for_SDX_Pivot	Enter the SDX-TzPivots Settings below
HrsServerTzFromGMT	2
HrsChoiceTzFromGMT	0

Load Save OK Cancel Reset

Save As

Interbank FX Trader 4 MQL4 Presets

Organize Views New Folder

Favorite Links

- Dropbox
- Recent Places
- Desktop
- Computer

Name	Date
fav pairs.set	17/4/2
nz au week 08.set	18/2/2
set b600.set	7/2/20
week16 eu set.set	15/4/2
week43 GBPAUD.set	19/10
week 17 AUDxxx.set	22/4/2
week 18 EA H1.set	27/4/2
<input checked="" type="checkbox"/> week 18 GBPUSD D1.set	27/4/2

File name: week 18 GBPUSD D1.set

Save as type: Expert Set (*.set)

Hide Folders Save Cancel

THV CaveManager v1.41x

GBPUSD D1

* TMS 5-Method *

Position: GBPUSD LONG at 1.51827 (SL 118 pips, TP 277 pips)

MA(20) 49.9120 ATR(10) 0.0127 ATR(20) 0.0134

2015 19 Jan 2015 23 Jan 2015 29 Jan 2015 4 Feb 2015 10 Feb 2015 16 Feb 2015 20 Feb 2015 26 Feb 2015 4 Mar 2015 10 Mar 2015 16 Mar 2015 20 Mar 2015 26 Mar 2015 1 Apr 2015 7 Apr 2015 13 Apr 2015 17 Apr 2015 23 Apr 2015